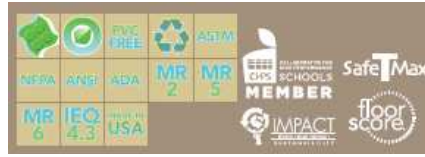
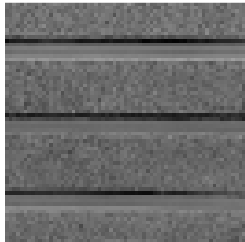


**Raised Design**  
**Rubber Floor Tile 953**  
**MADE IN THE USA**  
**PRODUCT SUBMITTAL**



**1. Manufacturer**  
**Roppe Corporation**  
 1602 N. Union Street  
 P.O. Box 1158  
 Fostoria, Ohio USA 44830-1158  
 t: (419) 435.8546 tf: (800) 537.9527  
 f: (419) 435.1056  
 e-mail: sales@roppe.com  
[www.roppe.com](http://www.roppe.com)



**2. Product Description**

Roppe Raised Design Rubber Floor Tile is vulcanized and homogeneous and is designed for interior use in high traffic areas. Available in seven different styles. Also available is Dimensions rubber tiles, which come in three new designs: Crackle 982, Random 983 and Stripe 984. Warning Tile which is designed to alert the visually impaired to approaching changes in elevation. Lug-Back tile with its superior adhesion is available in Vantage Design only.

**Profile:** 953 Warning Tile

**Size:** 24" X 24" (609.6mm X 609.6mm)

**Overall Thickness:** 1/8" (3.175mm), 1/32" (1.27mm) without profile, 1/8" (3.175mm) with profile.

**Packaging:**

- No. Per Carton: 10
- Wt. Per Carton: 40 lbs (18.14kg)
- Sq. Ft. Per Carton: 40 (3.72 sq/m)

**3. Technical Data**

Raised Design Tile meets Class 1 ASTM F-1344

- **Hardness** Min 85 Shore A D-2240
- **Static Load Resistance** ≤0.005 in. (0.127) @ 250lb. (113.4kg) load f-970
- **Resistance to Short-Term Chemical Exposure:** No more than slight change in surface dulling, surface attack or staining F-925.
- **Resistance to heat** average Delta E not greater than 8.0 f-1514
- **Abrasion Resistance** less than 1 gram loss after 1,000 cycles D-3389m
- **Dimensional Stability:** The dimensional change of the rubber floor tile in both the machine direction (MD) and the Across machine (AMD) shall not exceed 0.15% F-2199
- **Thickness** as specified, Smooth Surface tile ±0.005 in (±0.127mm) F-386, Molded Pattern tile +0.015/-0.005 in. (+0.381 mm/-0.127mm) F-386, Embossed Pattern Tile +0.015/-0.005 in. (+0.381 mm/-0.127mm) F-373
- **Size** up to & including 12 by 12 in = ±0.016 in (±0.4mm) F-2055, Larger than 12 by 12 in & up to & including 24 by 24 in = ±0.018 in. (±0.45mm). Larger than 24 by 24 in = ±0.020 in (±0.5mm)
- **Squareness** Max, 0.005 in (0.127mm) max F-2055
- **Quality of Cut** 0.005 in (0.127mm) max, F-511

**4. Installation\*** (Visit [roppe.com](http://roppe.com) for complete Installation instructions)

All Materials are to be delivered to the installation location in its original packaging with labels intact. Stack tile evenly on a smooth dry surface with each stack no more that 18" high at least 48 hours prior to installation in order to acclimate. The installation area, substrate, rubber flooring, and adhesive are to be maintained between 65° F (19°C) and 85° F(30°C) for at least 48 hours before installation, during installation and thereafter.

**Adhesives**

**Top 360** Acrylic Tile & Stair Tread Adhesive is a solvent free, high strength, acrylic adhesive for indoor installments over recommended & properly prepared concrete & wood subfloors only, on grade or above grade only.

**Top 435** Solvent Free Epoxy Flooring Adhesive is a solvent free, non-flammable, high performance epoxy adhesive for indoor installations over porous and non-porous substrates (excluding metal or slightly flexing substrates) on grade, below grade, or above grade.

**Roppe 535U** "Universal" Urethane Enhanced Epoxy Two-Part Adhesive is recommended for indoor installations over properly prepared and recommended concrete, plywood, metal and other non-porous substrates. Must be used for installations areas where the flooring will be subjected to lateral shear stresses and/or rolling loads in areas subjected to topical moisture and other liquids, and over metal and some other non-porous substrates, in addition to radiant-heat floors.

**5. Maintenance\*** (Visit [roppe.com](http://roppe.com) for complete Maintenance instructions)

Please choose the correct procedure/procedures pertaining to your specific installation. Read the manufacturers recommendations, procedures and cautions before applying. Always test a small area first to ensure the desired results are achieved before proceeding. The first month after the installation of Roppe Rubber Tile should be used as a test period to assess the best procedure for continued maintenance. Insufficient cleaning and maintenance will reduce the wear life and appearance of the tile.

**6. Availability and Cost**

Products are available through Roppe distributors. Contact Roppe Customer Service (800) 537-9527 or visit [www.roppe.com](http://www.roppe.com).

**7. Technical Assistance**

Technical service information and assistance may be obtained by calling Roppe Customer Service at 1-800-537-9527, or by visiting [www.roppe.com](http://www.roppe.com).

**Samples** may be obtained by may be obtained by calling Roppe Customer Service at 1-800-537-9527, or by visiting [www.roppe.com](http://www.roppe.com).

**8. Limited Warranty**

Roppe Raised Rubber Tile is warranted for a period of one (1) year from date of installation to be free of defects in material and workmanship. Roppe has both a five (5) year (See Limited Wear Warranty) and ten (10) Year Limited Wear Warranty on Roppe Raised Rubber Tile 1/8" thick tile for non-transit use, based by product design and installation purpose, if installed, maintained, and used strictly in accordance with Roppe's written instructions and installed with the recommended Roppe adhesive.

**\*For complete installation and maintenance instructions visit [www.roppe.com](http://www.roppe.com).**

