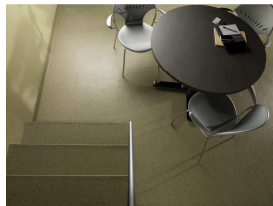




1. Manufacturer
Roppe Corporation
 1602 N. Union Street
 P.O. Box 1158
 Fostoria, Ohio USA 44830-1158
 t: (419) 435.8546 tf: (800) 537.9527
 f: (419) 435.1056
 e-mail: sales@roppe.com
www.roppe.com



2. Product Description

Roppe Fiesta Tile is non-conductive and resists scuffing, gouging, cigarette scorching, and most chemicals and common substances. The textured designs allow dirt and liquids to drain off, reducing the chances of slippage. Roppe Fiesta rubber floor tile is designed for interior use in high traffic areas. Typical applications include terminals, malls, schools, recreational facilities, public buildings, department stores, elevators, lobbies, and ramps. With SafeTcork Fiesta Tile, you get the benefits of enhanced traction with the design flexibility and good looks of our Fiesta line. Flame Retardant, Antifungal, & Oil, Grease Resistant performance compounds available upon request.

Profiles: 969 3/16" Smooth, 970 Smooth, 991 Slate, 992 Low Profile, 993 Textured, 994 Raised Square, 995 Hammered, 996 Raised Circular.

Dimensions: 19 – 11/16" (50cm) x 19 – 11/16" (50cm) nominal
Packaging: Sixteen (16) Tile per carton, excluding #969 3/16" Smooth tile which has Ten (10) tiles per carton.

Square Feet per Carton: 43 (3.99sq/m), excluding #969 3/16" Smooth tile

Colors: 401 Camello, 404 Niebla, 407 Tierra, 408 Marron, 409 Oscuro, 410 Marengo, 411 Fiel, 412 Musgo, 413 Amarillo, 414 Rojo, 415 Morado, 416 Avahar.

3. Technical Data

Raised Design Tile meets Class 1 ASTM F-1344

- **Hardness** Min 85 Shore A D-2240
- **Static Load Resistance** ≤ 0.005 in. (0.127) @ 250lb. (113.4kg) load f-970
- **Resistance to Short-Term Chemical Exposure:** No more than slight change in surface dulling, surface attack or staining F-925.
- **Abrasion Resistance** less than 1 gram loss after 1,000 cycles D-3389m.
- **Dimensional Stability:** The dimensional change of the rubber floor tile in both the machine direction (MD) and the Across machine (AMD) shall not exceed 0.15% F-2199
- **Thickness** as specified, Smooth Surface tile ± 0.005 in (± 0.127 mm) F-386, Molded Pattern tile $+0.015/-0.005$ in. ($+0.381$ mm/ -0.127 mm) F-386, Embossed Pattern Tile $+0.015/-0.005$ in. ($+0.381$ mm/ -0.127 mm) F-373
- **Size:** up to & including 12 by 12 in = ± 0.016 in (± 0.4 mm) F-2055, Larger than 12 by 12 in & up to & including 24 by 24 in = ± 0.018 in. (± 0.45 mm). Larger than 24 by 24 in = ± 0.020 in (± 0.5 mm).
- **Squareness** Max, 0.005 in (0.127mm) max F-2055
- **Quality of Cut:** 0.005 in (0.127mm) max, F-511.

4. Installation* (Visit roppe.com for complete Installation instructions)

All materials are to be delivered to the installation location in its original packaging with labels intact. Store products in a dry area protected from the weather on a smooth, flat, dry surface with temperatures maintained between 65° F (19° C) and 85° F (30° C). Do not stack pallets. Remove the tile from the cartons and stack evenly on a smooth dry surface with each stack no more than 18" high at least 48 hours prior to installation in order to acclimate. The installation area, substrate, rubber flooring, and adhesive are to be maintained between 65° F (19° C) and 85° F (30° C) for at least 48 hours before installation, during installation, and thereafter. Maintain room temperatures between 65° F (19° C) and 85° F (30° C) thereafter to prevent adhesive failure and to prevent distortion or destruction of the tile.

Adhesives

Rop360 Acrylic Tile & Stair Tread Adhesive is a solvent free, high strength, acrylic adhesive for indoor installations over recommended & properly prepared concrete & wood subfloors only. Use for limited to casual foot traffic, in areas where there are no lateral shear stresses or rolling loads, nor in areas that will not be subjected to topical moisture or liquids.

Rop435 Solvent Free Epoxy Flooring Adhesive is a solvent free, non-flammable, high performance epoxy adhesive for indoor installations over porous and non-porous substrates (excluding metal or slightly flexing substrates). Rop435 must be used for installations in areas where the flooring will be subjected to lateral shear stresses and/or rolling loads, and most other non-porous substrates, excluding metal and other slightly flexing substrates.

Roppe 535U "Universal" Urethane Enhanced Epoxy Two-Part Adhesive is recommended for indoor installations over properly prepared and recommended concrete, plywood, metal and other non-porous substrates. Must be used for installations areas where the flooring will be subjected to lateral shear stresses and/or rolling loads in areas subjected to topical moisture and other liquids, and over metal and some other non-porous substrates, in addition to radiant-heat floors.

5. Maintenance* (Visit roppe.com for complete Maintenance instructions)

Please choose the correct procedure/procedures pertaining to your specific installation. Read the manufacturers recommendations, procedures and cautions before applying. Always test a small area first to ensure the desired results are achieved before proceeding. The first month after the installation of Roppe Rubber Tile should be used as a test period to assess the best procedure for continued maintenance. Insufficient cleaning and maintenance will reduce the wear life and appearance of the tile.

6. Availability and Cost

Products are available through Roppe distributors. Contact Roppe Customer Service (800) 537-9527 or visit www.roppe.com.

7. Technical Assistance

Technical service information and assistance may be obtained by calling Roppe Customer Service at 1-800-537-9527, or by visiting www.roppe.com.

Samples may be obtained by may be obtained by calling Roppe Customer Service at 1-800-537-9527, or by visiting www.roppe.com.

8. Limited Warranty

Roppe Fiesta Rubber Tile is warranted for a period of one (1) year from date of installation to be free of defects in material and workmanship. Roppe has both a five (5) year and ten (10) Year Limited Wear Warranty

***For complete installation and maintenance instructions visit www.roppe.com.**

