

700 series

wall base

MADE IN THE USA
PRODUCT SUBMITTAL



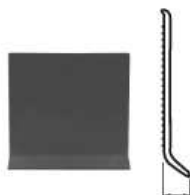
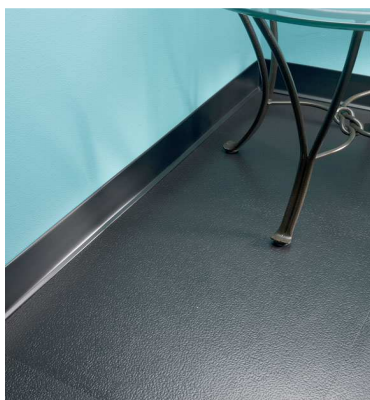
ROPPE.

Proven. Flooring. Experiences.



1. Manufacturer

Roppe Corporation
1602 N. Union Street
P.O. Box 1158
Fostoria, Ohio USA 44830-1158
t: (419) 435.8546 tf: (800) 537.9527
f: (419) 435.1056
e-mail: sales@roppe.com
www.roppe.com



Standard Toe:
For many installations.

2. Product Description

Roppe 700 Series Wall Base is designed for use in both commercial and residential wall base applications. Easier to work with and providing more flexibility than vinyl base products, Roppe's unique blend of thermoplastic rubber and vinyl makes the 700 Series an attractive and economical choice for a variety of applications.

Gauge: 1/8" nominal (3.175mm)

Height: 2 1/2" (63.5mm), 4" (101.6mm), 6" (152.4mm) all nominal

Styles: Coved & straight styles in 2 1/2", 4", 6" all nominal

Lengths: 48" (1.22m) nominal lengths & 120' ft (36.576m) nominal coils

Pre-Formed Corners: Available in Inside Standard Toe, Outside Standard Toe and Outside No Toe, in 2-1/2" (63.5mm), 4" (101.6mm) and 6" (152.4mm) nominal heights. All Corners have nominal return lengths of 3" (76.2mm). Pre-Formed Available Colors: Pre-formed inside and outside thermoplastic rubber wall base corners are available in the same colors as 700 Series Wall Base.

Inside & Outside Rubber Corner Blocks

Gauge: Nominal 17/32" (13.49mm)

Width: Nominal 1" (25.4mm)

Height: Available in all heights matching 700 Series Wall Base

Rubber Corner Blocks Height: custom order height as needed.

Roppe recommends that corner blocks be ordered at least 1/4" taller than the finished height of the wall base that it will be used with. Any necessary corner height reductions can be achieved by simply trimming the bottom end of corner blocks.

Colors: Available in all 70 colors that coordinate with the 700 Series Wall Base

Inside & Outside Rubber Corner Blocks Attached Wings

Gauge: Nominal 3-64" (1.19mm)

Wing Width: 1" each side of corner block

3. Technical Data

Roppe 700 Series Base meets Federal Specification F-1861 for Type TP Thermoplastic Rubber.

- **Thickness:** ASTM F-386, 1/8" (3.175mm) ±0.15" 90±5
- **Hardness:** 90±5
- **Flexibility:** ASTM F-137, 1/4" (6.35mm) mandrel, no cracking or breaking
- **Staining:** ASTM F-1861 Section 12, complies, no staining.
- **Light Resistance:** ASTM F-925, complies (chemical listed in ASTM F-1861, 8.4.1-8.4.11)
- **Dimensional Stability:** ASTM F-1861, complies ±.25% x length
- **Squareness:** 90 degrees ±.5 degrees.

4. Installation* (Visit roppe.com for complete Installation instructions)

All material is to be delivered to the installation location in its original packaging with labels intact. The installation area, unboxed wall base and adhesive are to be maintained between 65° (19°C) and 85° (30°C) for at least 48 hours before installation, during installation and thereafter. Proceed with the installation only when the conditions are proper and correct. Inspect all material for proper type and color. A bond test should be performed at least 72 hours prior to the scheduled installation to ensure the surface is suitable and there should be extreme difficulty in removing the wall base from the surface.

Adhesives

ROP 215 Wall Base Adhesive is an Acrylic Based Adhesive specifically formulated for the installation of 700 Series Wall Base.

5. Maintenance* (Visit roppe.com for complete Maintenance instructions)

Wipe off residue with a smooth clean cloth slightly dampened with cool water, remove the water with a clean soft cloth, and allow the wall base to dry.

6. Availability and Cost

Products are available through Roppe distributors. Contact Roppe Customer Service (800) 537-9527 or visit www.roppe.com.

7. Technical Assistance

Technical service information and assistance may be obtained by calling Roppe Customer Service at 1-800-537-9527, or by visiting www.roppe.com.

Samples may be obtained by may be obtained by calling Roppe Customer Service at 1-800-537-9527, or by visiting www.roppe.com.

8. Limited Warranty

Roppe Corporation manufactures and markets its wall base, 700 Series, which is warranted for a period of (1) year from Date of installation to be free of defects in material and workmanship.

*For complete installation and maintenance instructions visit www.roppe.com.

